

How to use the online licensing system?

Step 0: Roles and definitions

To use Consteel with an online licensing system you will need a software access and software seat.

Software seat: the software seats define the number of independent accesses to the software license simultaneously

Software access: Grants the End user the right to access free software seat and use the software.

Membership access: Comes with a software access, grants right to access additional Consteel services.

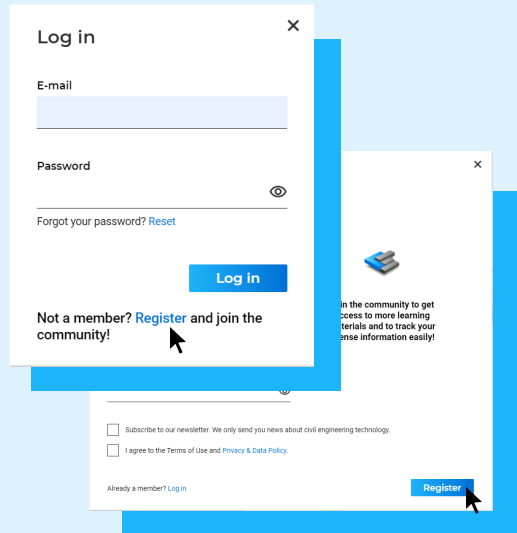
License holder: The one who actually is in contract with the license seller and owns a purchased licence. Has a License holder account with admin authority and can assign software access and seats to End users.

End user: The actual user of the software through software access and seat permission granted by the license holder. Has an End user account.

For End users

Website

Step 1: Register



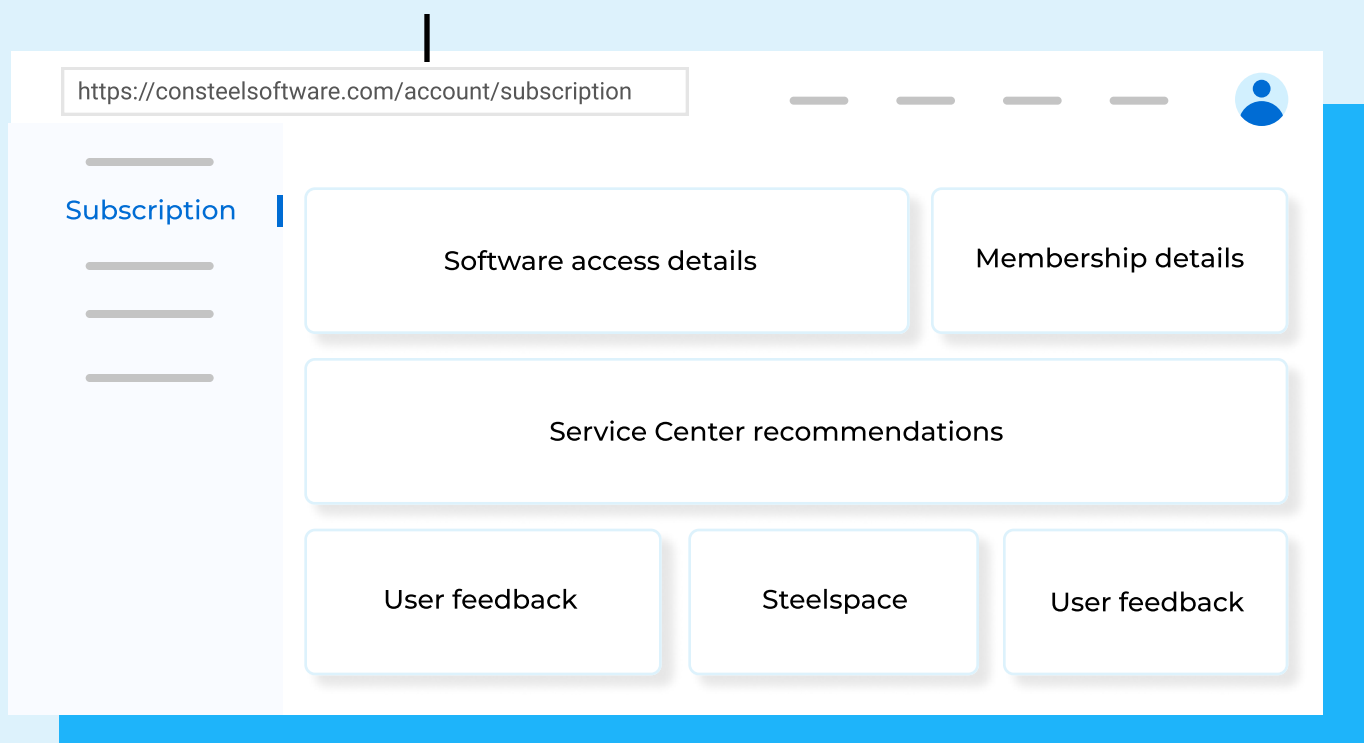
Register on the consteelsoftware.com website and create an account. Don't forget to verify your email address!

Step 2: Gain software access

Contact your Licence holder to assign you a software access and a seat.

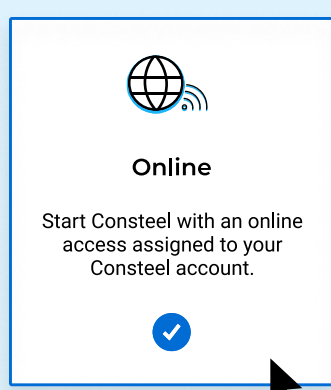
Online subscription interface

You can monitor your status within the Subscription tab. When you receive software access, you can see all necessary details regarding your account.



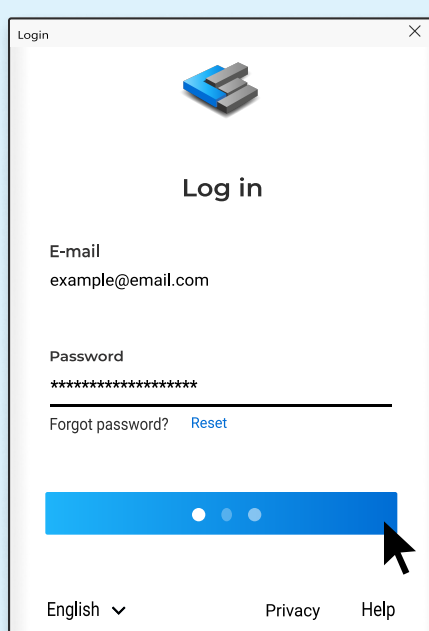
Consteel

Step 3: Choose protection type



When starting Consteel 15, choose the online protection type.

Step 4: Login



Login with your online account.

Step 5: Select seat

Seat name

Available

Select

Step 6: Start working

From now on you can create a new model or load an existing one and start using Consteel 15!